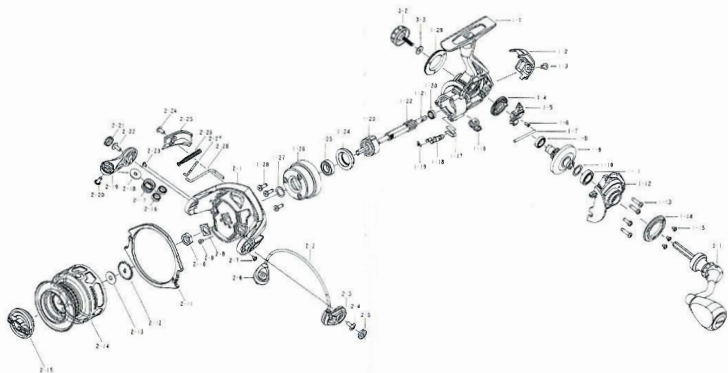


# EXPLODED DRAWING



1-1. main body  
1-2. body rear cover  
1-3. screw  
1-4. drive gear  
1-5. slider  
1-6. screw  
1-7. slider shaft  
1-8. body ball bearing  
1-9. main gear  
1-10. main gear washer  
1-11. ball bearing  
1-12. main cover  
1-13. screw  
1-14. body side cover  
1-15. screw  
1-16. anti reverse button  
1-17. spring plate  
1-18. anti-reverse shaft  
1-19. spring  
1-20. pinion ball bearing

1-21. main shaft  
1-22. pinion gear  
1-23. one way clutch  
1-24. bushing  
1-25. ball bearing  
1-26. o.w.c. cover  
1-27. washer  
1-28. screw  
1-29. body side cover  
2-1. rotor  
2-2. bail line system  
2-3. bail arm  
2-4. screw  
2-5. bail arm cover  
2-6. bail line strip  
2-7. screw  
2-8. keeper  
2-9. screw  
2-10. rotor nut  
2-11. line guard

2-12. click gear  
2-13. washer  
2-14. spool  
2-15. drag button  
2-16. ball bearing  
2-17. line roller  
2-18. washer  
2-20. screw  
2-21. bail arm cover  
2-22. screw  
2-23. screw  
2-24. screw  
2-25. rotor cover  
2-26. spring  
2-27. shaft  
2-28. bail shaft  
3-1. handle system  
3-2. handle cover  
3-3. handle screw washer